



**DRAFT**  
ACT NATIVE WOODLAND  
CONSERVATION  
STRATEGY

APRIL 2019



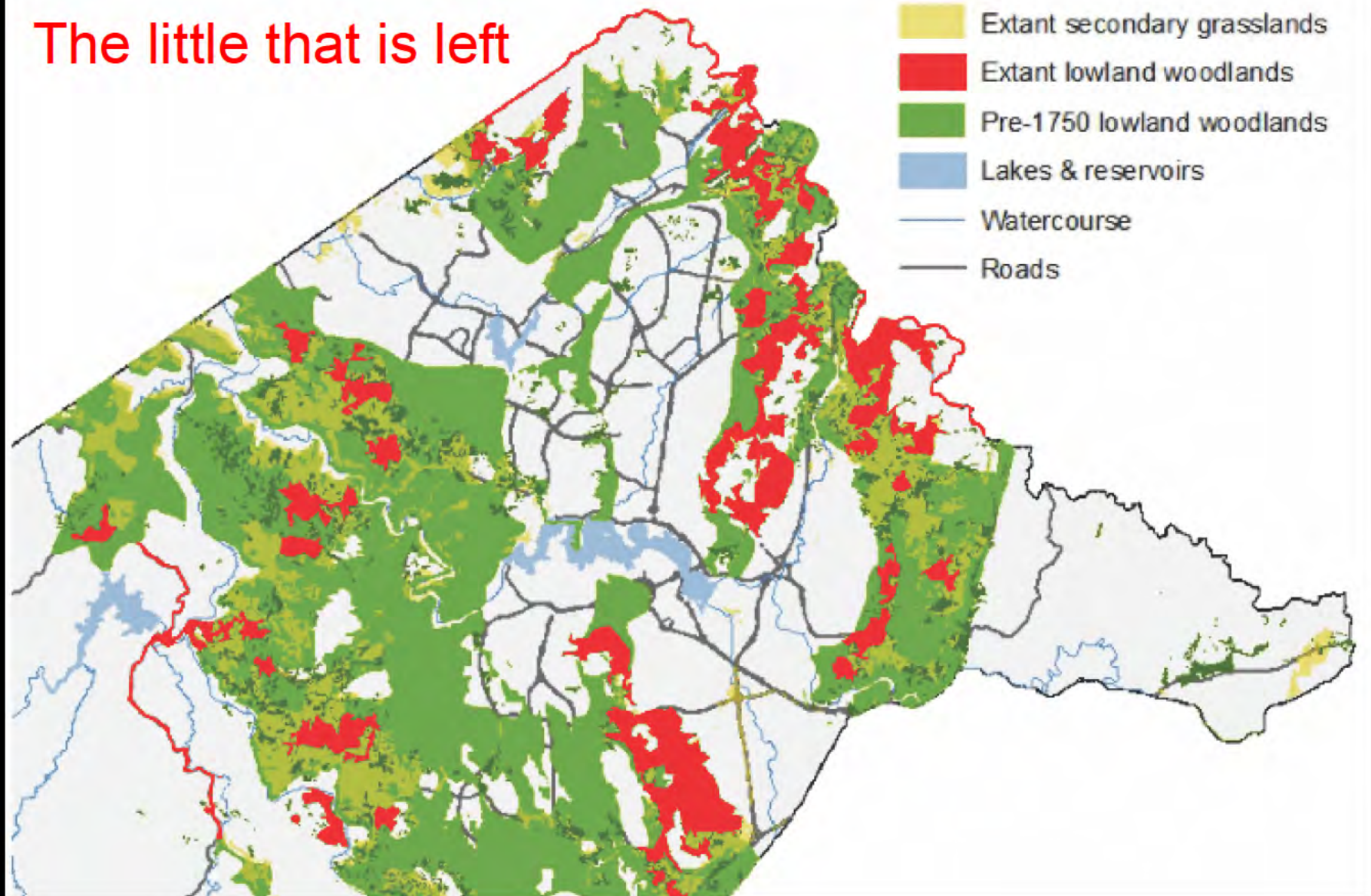
**PART B**  
**ACTION PLANS**



**Missed NCCC Input Opportunities:  
Grassy Woodland Stakeholder Group**

# Critically endangered Grassy Woodlands

The little that is left



2002

Legend

Google Earth

Image © 2018 DigitalGlobe



800 m



2018

Legend

Google Earth

Image © 2018 CNES / Airbus



800 m



2018

Legend



Google Earth

Image © 2018 CHES / Airbus

800 m

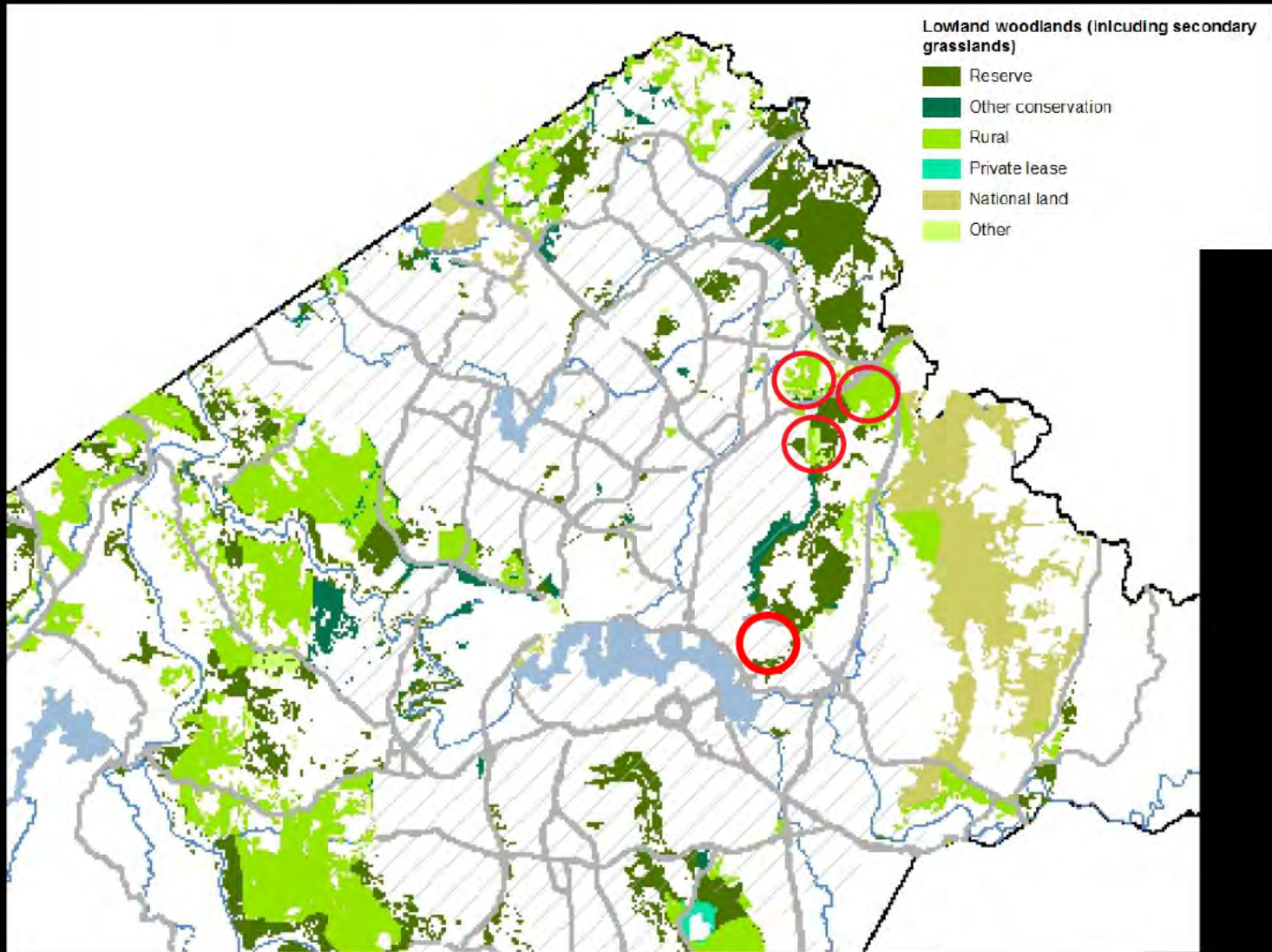
N

Submissions due by 24 May 2019

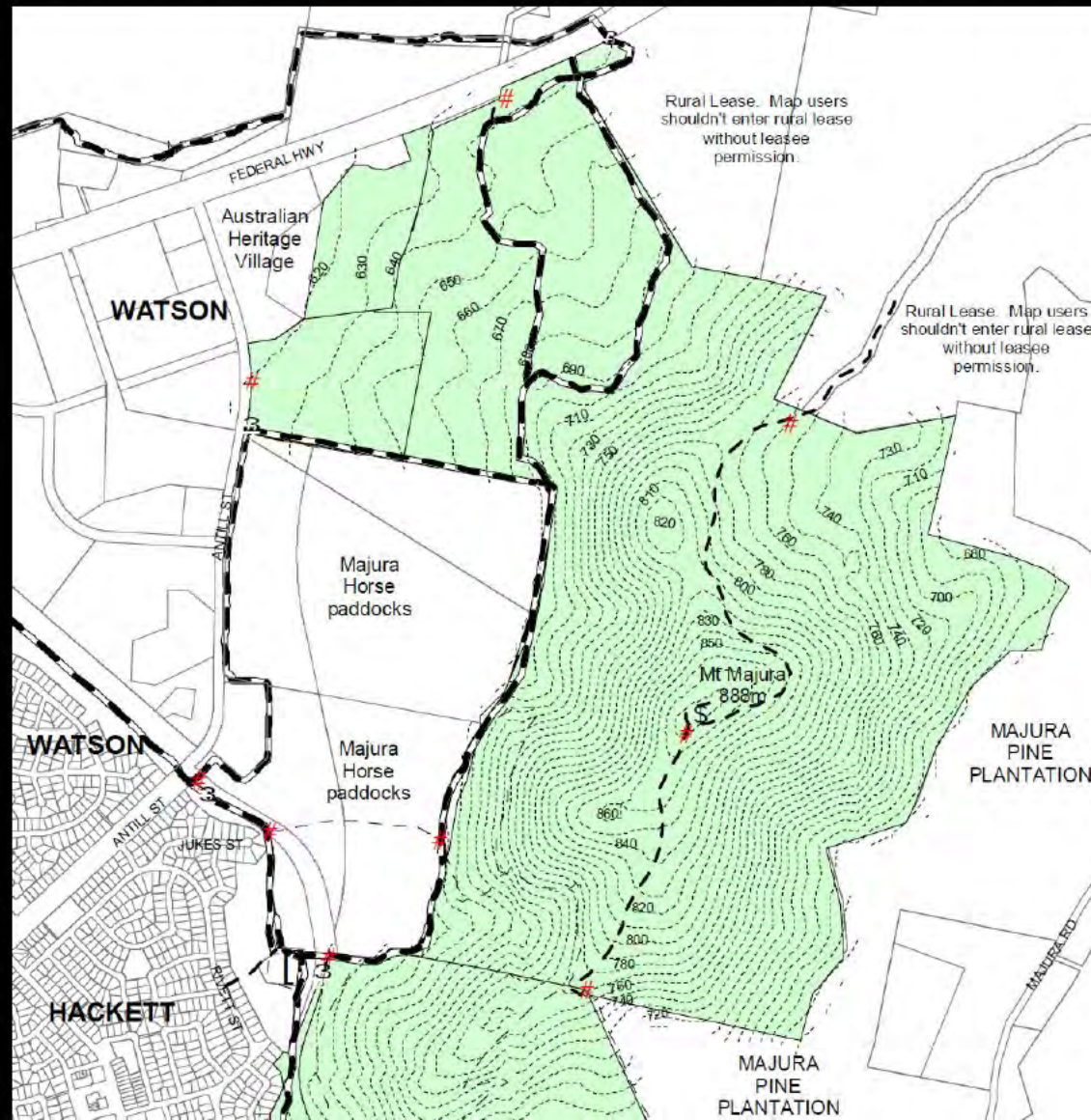
The single most important request is:

Identify and quarantine  
from future development all  
remaining areas of  
endangered grassy woodland,  
including degraded areas.

# North Canberra Issues: North Watson & Remembrance Park



# Example 1: Mount Majura Horse Paddocks



# Example 2: Remembrance Park



REMEMBRANCE NATURE PARK  
PROTECTING YELLOW BOX - RED GUM  
GRASSY WOODLAND  
ENQUIRIES: PH 6207 2113

This nature park commemorates the signing of the armistice on 11 November 1918 and the Aboriginal people who served in the armed forces. Walk through the park from the Australian War Memorial and join up with the Mount Ainslie Summit Trail. Make the most of the sealed trail through a series of interpretive signs.



*Dr Nelson: The land that is immediately behind Treloar Crescent, behind the existing Anzac Hall, just across the road, we need to acquire that land. We don't anticipate that will be a problem. The ACT government has been very supportive with this project. We want to acquire that land and build the facilities for the construction teams that will be coming in next year to work on the project.*

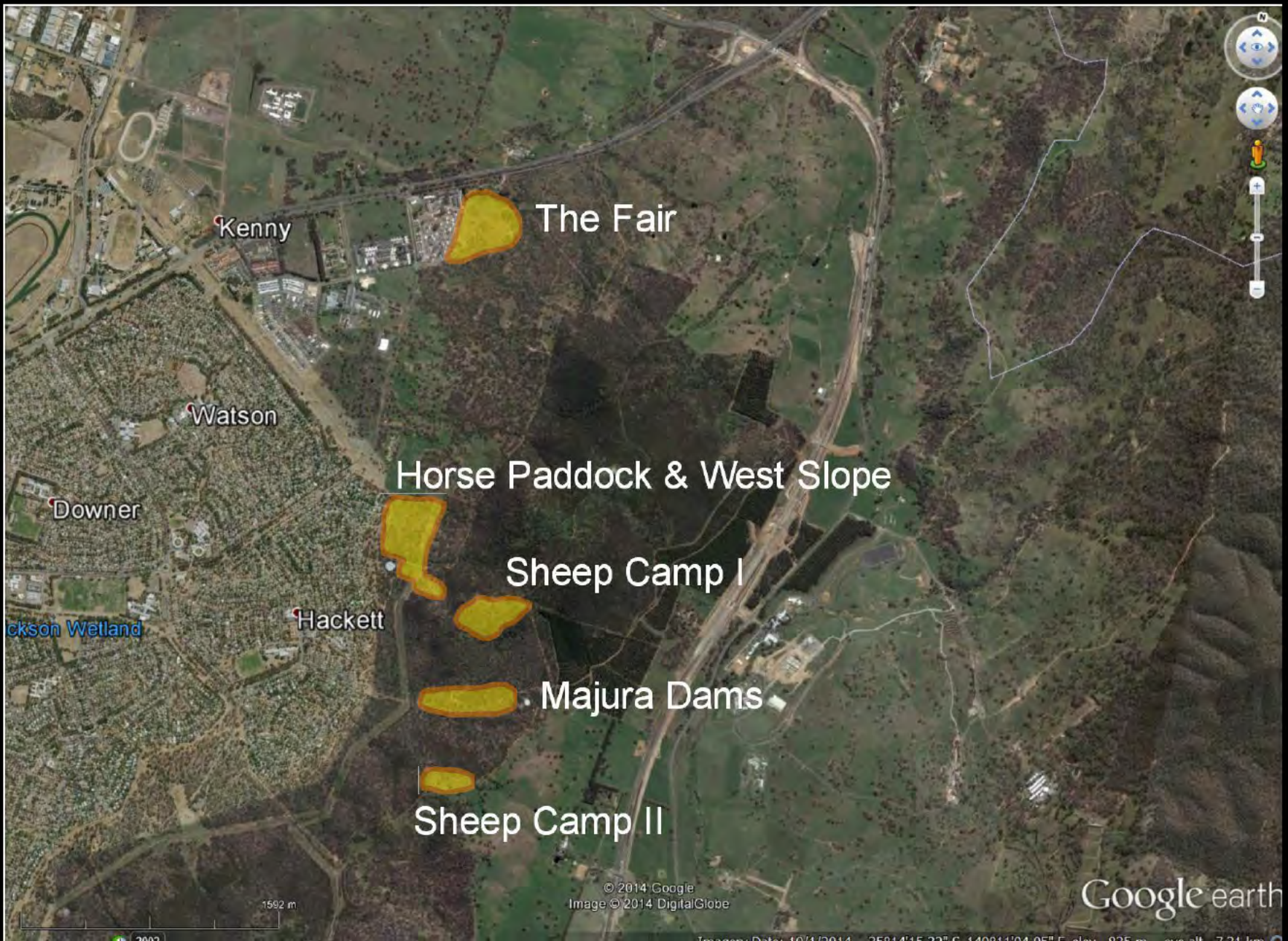
# Nature Conservation in North Canberra

- a. On-ground Conservation Work
- b. Outreach
- c. Canberra Nature Map
- d. Lobbying & Politics



Photograph by Tristan Armstrong

# Major FoMM Projects



# FoMM & NCCC Supported Projects: The Fair

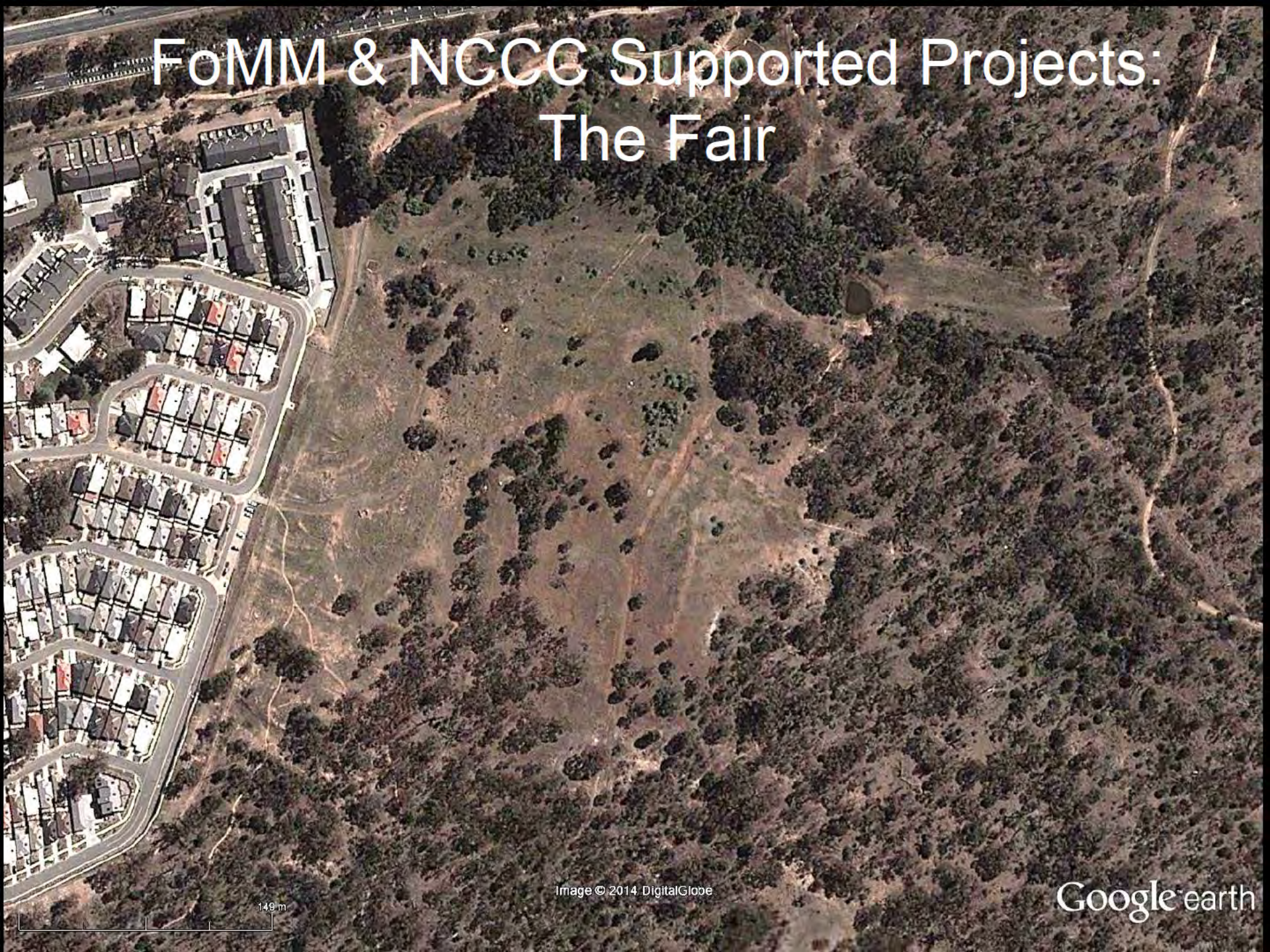
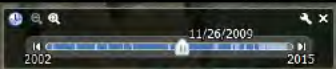


Image © 2014 DigitalGlobe

Google earth

149 m

# The Fair: DA Submissions



2009

**FoMM:** ... set up a **community engagement program** to educate residents about living at the interface with Mount Majura Nature Park; **implement all storm water and fire management measures** strictly within the **development site** – further encroachment into the Mount Majura Nature Park as proposed by the proponent is completely unacceptable; implement management measures to **avoid an increase of kangaroo-car collisions** and road kill on Antill Street as a result of increased traffic; implement a cat-free or **cat-containment policy**; implement a **no-dog policy** within the northwestern part of the Mount Majura Nature Park; **provide infrastructure such as a fence, a clear entry point with interpretative display** and a network of **formed tracks** to avoid trampling native vegetation including listed flora; request **funding contributions by the proponent towards the implementation of infrastructure and for the continued maintenance of the reserve** to cater for increased use of the northwest part of Mount Majura Nature Park.

**NCCC:** ... requests that this particular development application be rejected because

- (a) it not only **threatens to destroy endangered habitat on site**, but also
- (b) would **encroach on the already fragmented nature reserve** and
- (c) would threaten **to increase recreational use of the nature reserve** in a situation in which the ACT government **land managers** of the nature reserve **struggle to meet the minimal requirements of appropriate management** of natural resources.

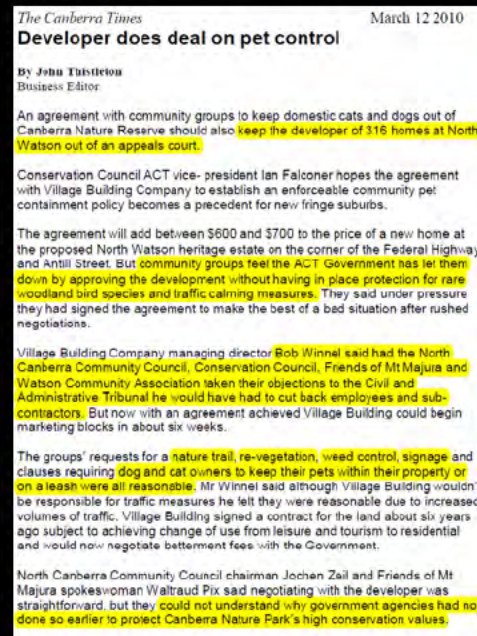
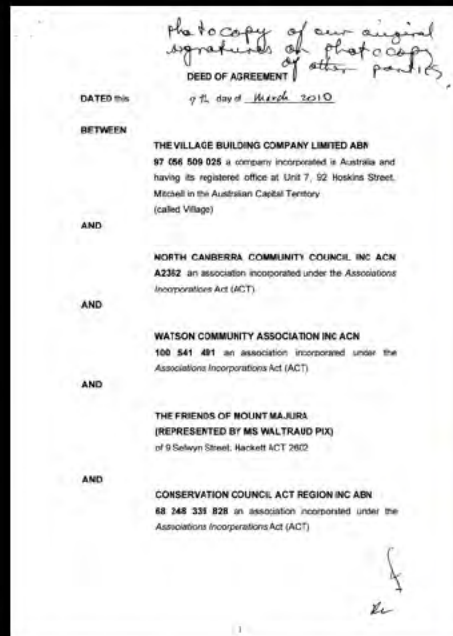
**WCA:** ... the Nature Reserve is to be treated as **Urban Open Space**. This does not give adequate consideration to ...**bio-diversity values** it represents. ...where there are **no formed tracks** would be highly inappropriate. The nearest **formal entry point** to the reserve.... **Body Corporate** would be left to make a decision on whether to **allow animals** on their property... these decisions should be mandated by the **ACT government**, in conjunction with Parks Conservation and Lands. Closed **cat and dog proof fencing** ...

ACTPLA ignored these submissions  
& NCCC decided to go to the TRIBUNAL



Village Company therefore wanted to negotiate

# This led to \$250,000 of funding for mitigating conservation actions & community engagement



Negotiated between  
NCCC, FoMM, Conservation Council,  
Watson Woodland Group and Village Company



# Mitigating actions

Volunteer work  
2010-2019:

- Access
- Tracks
- Signage
- Cat Curfew
- Community Engagement
- Invasive Garden Plants
- Rubbish
- Planting, Weeding, Erosion Control

## Problems:

- Lack of Compliance Management
- Rapid Tenant Turn-over
- Little Tenant Engagement

# Conservation Council's Treasures Book & Fact Sheets



CONSERVATION COUNCIL  
ACT REGION

## MAJURA'S TREASURES



A GUIDE TO INTERPRETING  
THE REGION'S HERITAGE

Majura's Treasures reveals the hidden, the interesting  
and the beautiful in one easy-to-use guide

Fact sheet 1 2013

### Wildlife of Mt Majura

Mount Majura  
NATURE RESERVE

Living with Nature on your Doorstep

#### Birds

Canberra has the richest birdlife of any Australian City, with more than 250 species occurring in the region. Mt Majura Nature Reserve is home to more than 110 species. You can download a list of birds spotted from [www.nccccc.org.au](http://www.nccccc.org.au).

Fact sheet 2 2013

### History of Mt Majura

Mount Majura  
NATURE RESERVE

Living with Nature on your Doorstep

#### Mount Majura with a fiery past

At 890 metres, Mt Majura is the highest peak in the Canberra region. The creation of the Mountain is dates back millions of years, as the direct result of volcanic activity. Once upon a time, the peak of Mt Majura had reached an impressive height of 1100 metres.

Over the years, the landscape has developed and changed, shaped by over 425 million years of geological processes, climatic change and the evolution of plants and animals in the area. In more recent times, the impact of farming and agriculture as well as other land use practices has changed and will continue to change the environment of the Mountain.

The roads on the lower slopes of Mt Majura have evidence of having been formed from the bed of a shallow tropical inland sea. This is supported by marine fossils found near the Park which include corals, crinoids, bryozoans and trilobites. Amongst them is a beautiful specimen of *Bellerophon brachycephalus*, a trilobite found during excavation of the John Gordon Building in central Canberra.

Around the peaks of Mt Majura and neighbouring Mt Ainslie, you can also see the evidence of the region's fiery volcanic past. Here you can find the remains of volcanic ash flow and pumice fragments.



Mt Majura and Mt Ainslie are part of the same volcanic system. The ash flow and pumice fragments are evidence of the volcanic activity that shaped the region.

This fact sheet was prepared by Conservation Council ACT Region, with generous support from the Majura Landcare Group, a community group dedicated to the conservation of Mt Majura.

Fact sheet 2 2013

### Plants of Mt Majura

Mount Majura  
NATURE RESERVE

Living with Nature on your Doorstep

Woods, shrubs, flowering herbs, ferns and grasses inhabit the woodlands and forests of Mt Majura Nature Reserve - and each year new ones are identified. Heres and dates of the annual wildflower walks visit [www.nccccc.org.au](http://www.nccccc.org.au).



Rushes and sedges can be found in wetter areas, such as in drainage lines and seepage sites. The grassy Mt Majura has some native grasses growing in the shallow soils of Mt Majura's ridges and slopes.

Wildflowers and shrubs

Mt Majura has a beautiful variety of flowering herbs and shrubs, from the delicate and delicate pink Native Geranium (*Geranium sibiricum*), to the bright orange Parrot Flower. After a good winter rain the Parrot Flower (*Leucospermum speciosum*), a pretty daisy with white petals and a yellow centre, can be found carpeting the slopes next to the Park.



Many of the plants are native to the region. The Parrot Flower (*Leucospermum speciosum*) is a native plant. The Parrot Flower (*Leucospermum speciosum*) is a native plant. The Parrot Flower (*Leucospermum speciosum*) is a native plant.

Financially supported by NCCC

# ParkCare Initiated & NCCC Supported Rabbit Control Program:

## GPS Mapping of Rabbit Warrens

